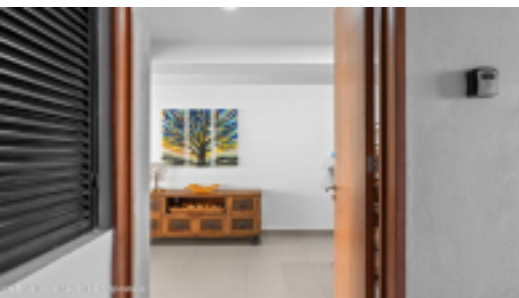




MLS Vallarta Nayarit Compostela



Parota Condo 6B blends comfort, practicality, and easy coastal living. Just one block from the beach, you can reach the shoreline in under a minute. Inside, the functional layout, high ceilings, natural light, and spacious areas create a perfect atmosphere, while the balcony delivers breathtaking ocean views. In a well-maintained 12-unit building, it offers a calm, low-density lifestyle with great value for its location and proximity to the beach, at a price point hard to match in the area. Features include an elevator, private parking, a storage unit, a

PROPERTY FEATURES

Type: Condo
Total Baths: 2
Total Bedrooms: 2
Primary View: Beach
Secondary View: Street